

## Product information

# 87 21 250

## KNIPEX Cobra® QuickSet High-tech Water Pump Pliers

DIN ISO 8976



- Fully open, push, grab!
- Additional fast adjustment on the workpiece by sliding the pliers handle
- Combines the proven, reliable locking of the hinge bolt with an additional push function which makes it easier to work in very confined and inaccessible areas
- The adjustment directly on the workpiece is possible by simply sliding the pliers handle
- Reliable locking of the hinge bolt with the first workload. The gripping width of the pliers is then fixed and can only be adjusted by pressing the button.
- To re-activate the sliding function, the hinge bolt must be released by pressing the push button and the pliers must be completely opened again
- Chrome vanadium electric steel, forged, multi stage oil-hardened

### General

Article No.	87 21 250
EAN	4003773072775
Pliers	grey atramentized
Head	polished
Handles	with non-slip plastic coating
Weight	335 g
Dimensions	250 x 59 x 20 mm
Standard	DIN ISO 8976
REACH compliant	no
RohS compliant	no

### Technical details

Adjustment positions	25
Capacity for pipes, inches (diameter)	Ø 2 Inch
Capacities for nuts	46 mm
Capacities for pipes (diameter)	Ø 50 mm

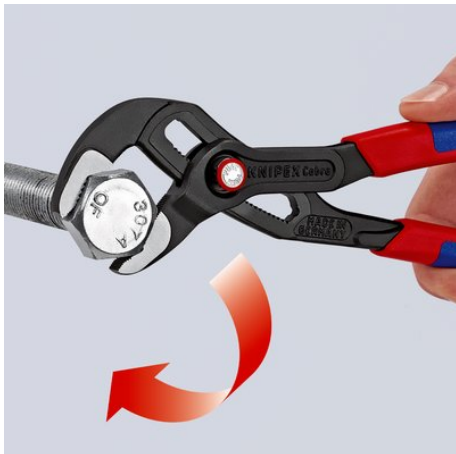
### Classification

eCl@ss 5.1.4	21040301
ETIM 5.0	EC000164
ETIM 6.0	EC000164
proficl@ss 6.0	AAA936c004
UNSPSC 13.1	27112112

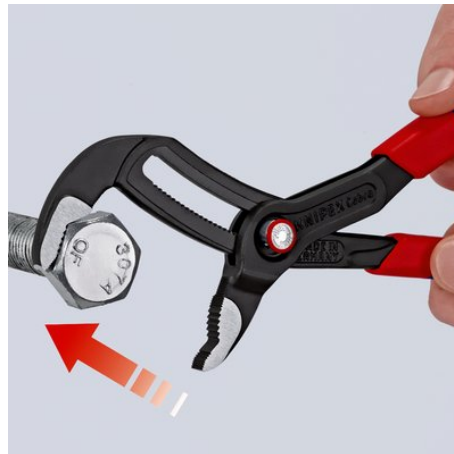
### Spare Parts

87 09 01	Assortment of spare parts for adjustment for 86/87 XX 250/300 (without 87 2X XXX),
87 29 01	range of spare parts for 87 2X-250,
87 29 01	range of spare parts for 87 2X-250,

technical change and errors excepted



Hinge bolt locks itself with the first workload



Position jaw – simply slide and close pliers



Press the button – open pliers completely